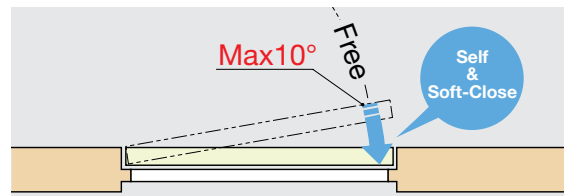
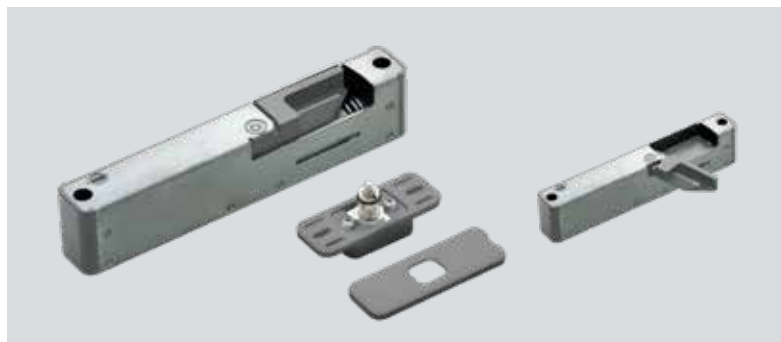


# LAPCON DOOR DAMPER (LDD-V)

Recessed type



- Door damper unit for interior, swinging doors.
- Grips door at final 10° and softly, self-closes doors more gently compared to other door closers, putting less stress on the hinges.
- "Invisible" design minimizes visibility of the hardware.
- Recommended Door Specifications:
  - Thickness: minimum 33 mm (1-5/16")
  - Width: maximum 914 mm (3' 0")
  - Weight: 15~40 kg (33~88 lbs)
- Can be adjusted for door weight after installation. Counterplate position can be easily adjusted by removing cover and turning micro-adjustment screws.
- Can be used with HES hinges (P.180~189), sold separately.
- Includes screws and paper template for installation.

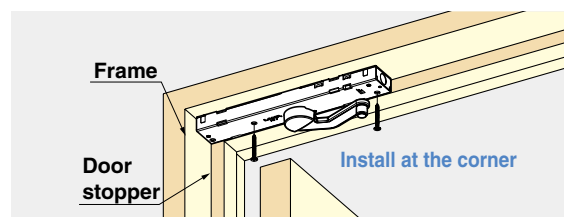
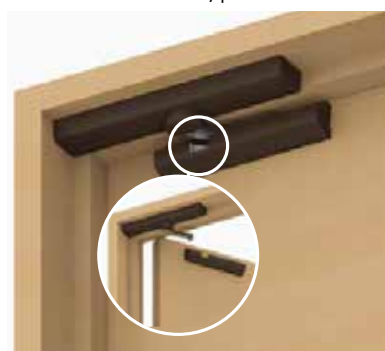


LDD-V

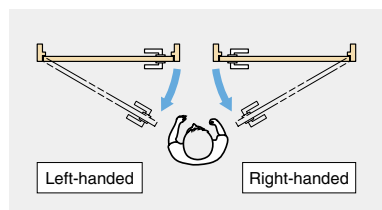
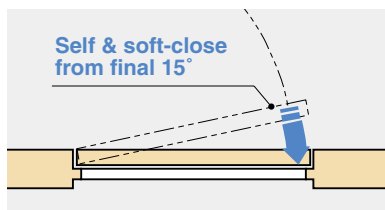
Item No.	Type	Door weight	Door width (mm)	Door Thickness (mm)	Material
LDD-V-R	Right	15 - 40 kg	Max. 914	Min. 33	Steel/Polyacetal/PBT
LDD-V-L	Left				

# LAPCON DOOR DAMPER (LDD-S)

Surface mount type



- Surface mount that can be retrofitted onto current door installations.
- Easy to align to proper positioning, speeding up installation.
- Slim profile (body height only 16 mm) can handle doors up to 40 kg in weight.
- Self and soft-closes within a 15° radius of closing.
- Doors feel lighter to open compared to standard door closers.
- Successfully passed 100,000 open/close cycles in private test.
- Damper force can be adjusted post-installation.
- Recommended Door Specifications:
  - Width : Max. 900 mm
  - Weight : 15 - 40 kg
- Successfully passed 100,000 open/close cycles in private test.



LDD-S

Item No.	Type	Door weight	Door width (mm)	Material
LDD-S-R	Right	15 - 40 kg	Max. 900	Steel, Zinc Alloy
LDD-S-L	Left			